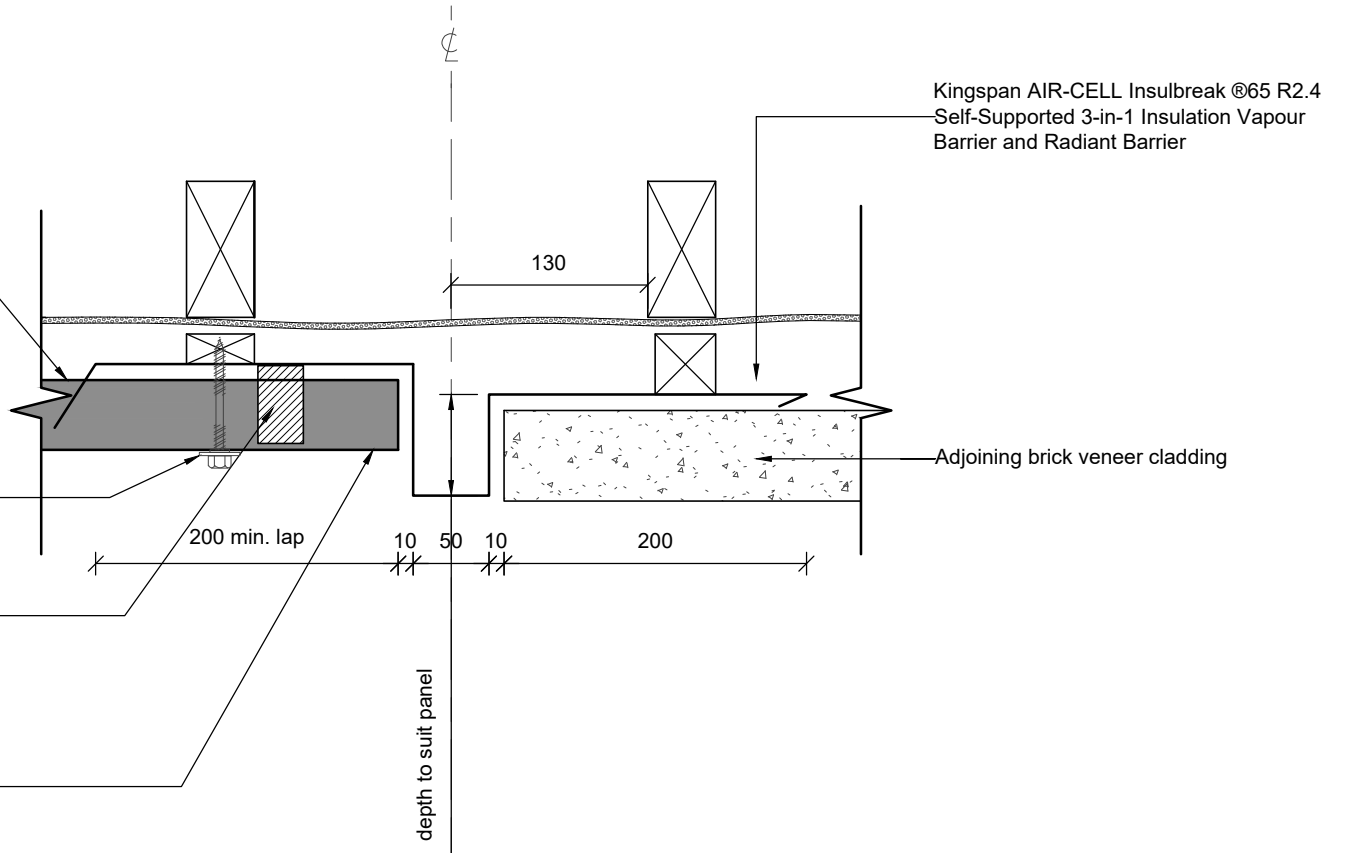


RPFL SuperDek® Colorbond® XRW/Ultra 0.42BMT/0.48BMT roof cladding. Base Materials: Steel Grade G550. BMT 0.42.Mass 4.3kg/m2 or 0.48BMT 4.9kg/m2. AZ 150 coating for XRW & AZ 200 coating for Ultra. Minimum Roof Pitch 2 degree. Profiles tested for Cyclonic Conditions.

BRA-TYPE 17 Self drilling assemblies for Timber. Type 17 14-10x75 HEX Bra.

Top & Bottom Infill Strips/filler block or profiled foam fillers insert between roof cladding and flashing.

RPFL Std Colorbond® XRW/Ultra 0.55 BMT CAPPING. Base Materials: coating AZ150/AZ200 Steel Grade G300. fixed to cladding with SDM Screw.



Note:

These details are suitably fixed to allow for a theoretical thermal movement of up to 10mm. For thermal movement greater than this a clipping system should be considered.



ROOFING & PROFILES (FIJI) LTD
PH: (679) 6673764. Mob: 9999 309
EMAIL: info@roofingandprofiles.com.fj

This drawing is the property of Roofing & Profiles (Fiji) Ltd and must not be copied or disclosed to any third party without the written consent of the company.
ALL DIMENSIONS ARE IN mm UNLESS STATED

PROJECT TITLE:
ADJOINING WALL DETAILS

DRAWING TITLE:
SHOP DRAWING

Nos:	Revision:		
1.			
2.			
3.			
4.			
5.			

DRAWN: R. Lal

DATE : 06/ 01 /2021

CHECKED BY: -

SCALE: 1:5 @ A4

REVISION No:

APPROVED BY: -

SHEET No : SD 2220

REVISION TITLE:

JOB NUMBER: