

BRA-TYPE 17 Self drilling assemblies for Timber.
Type 17 14-10x75 HEX Bra at every crest.

20mm thick cavity battens

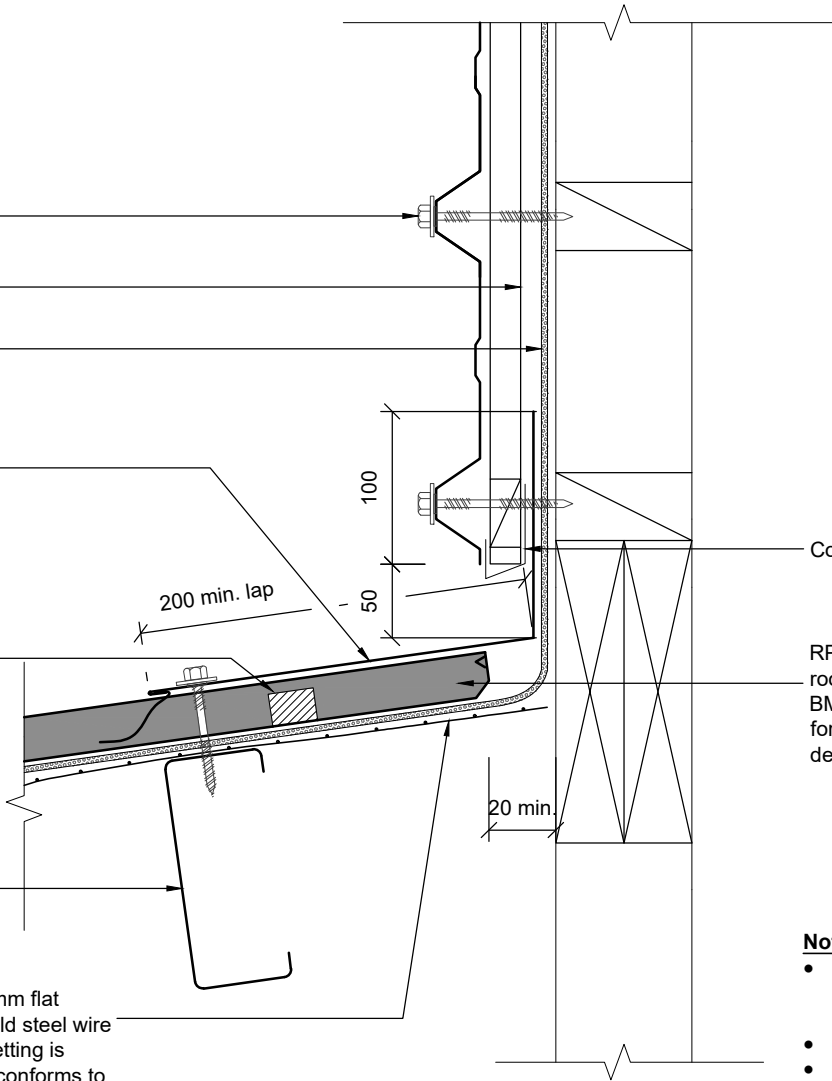
Kingspan AIR-CELL Insulbreak
®65 R2.4 Self-Supported 3-in-1
Insulation Vapour Barrier and
Radiant Barrier

RPFL Colorbond® XRW/Ultra 0.55 BMT Notched
Flashing Base Materials: coating AZ200 Steel
Grade G300. fixed to cladding ribs with SDM Screw.

Top & Bottom Infill Strips/filler block or
profiled foam fillers insert between roof
cladding and flashing.

RPFL Zed & Cee sections are roll
formed from GALVSTEEL, complying
with AS1397-2001. Metal thickness is
1.5, 1.9 & 2.4mm. BMT G450, Z450.

Bayonet Roof Safe Netting consists of a hexagonal, 113mm flat
mesh, manufactured from 1.0mm diameter galvansed mild steel wire
with 2 reinforcing wires of 1.2mm dia. 113mm roof safe netting is
supplied in rolls 1800mm wide in lengths of 50m. Netting conforms to
Class W02 of AS/NZS 4534:2006. Minimum mass of gal coating is
25g/m² for 1.0mm dia wire.



Continuous cavity drainage closure

RPFL SuperDek® Colorbond® XRW/Ultra 0.42BMT/0.48BMT
roof cladding turned down. Base Materials: Steel Grade G550.
BMT 0.42.Mass 4.3kg/m² or 0.48BMT 4.9kg/m². AZ 150 coating
for XRW & AZ 200 coating for Ultra. Minimum Roof Pitch 2
degree. Profiles tested for Cyclonic Conditions.

Notes:

- Foam closure strip only required if bird or vermin proofing is required, or if in high wind area, there is risk of windblown moisture entering the building.
- Leave foam out if ventilation is required.
- These details are suitably fixed to allow for a theoretical thermal movement of up to 10mm. For thermal movement greater than this a clipping system should be considered.



ROOFING & PROFILES (FIJI) LTD
PH: (679) 6673764. Mob: 9999 309
EMAIL: info@roofingandprofiles.com.fj

This drawing is the property of Roofing & Profiles (Fiji) Ltd and must not be copied or disclosed to any third party without the written consent of the company.
ALL DIMENSIONS ARE IN mm UNLESS STATED

PROJECT TITLE:
WALL TO ROOF DETAILS

DRAWING TITLE:
SHOP DRAWING

Nos:	Revision:		
1.			
2.			
3.			
4.			
5.			

DRAWN: R. Lal

DATE : 14/ 01 /2021

CHECKED BY: -

SCALE: 1:5 @ A4

REVISION No:

APPROVED BY: -

SHEET No : SD 2180

REVISION TITLE:

JOB NUMBER: