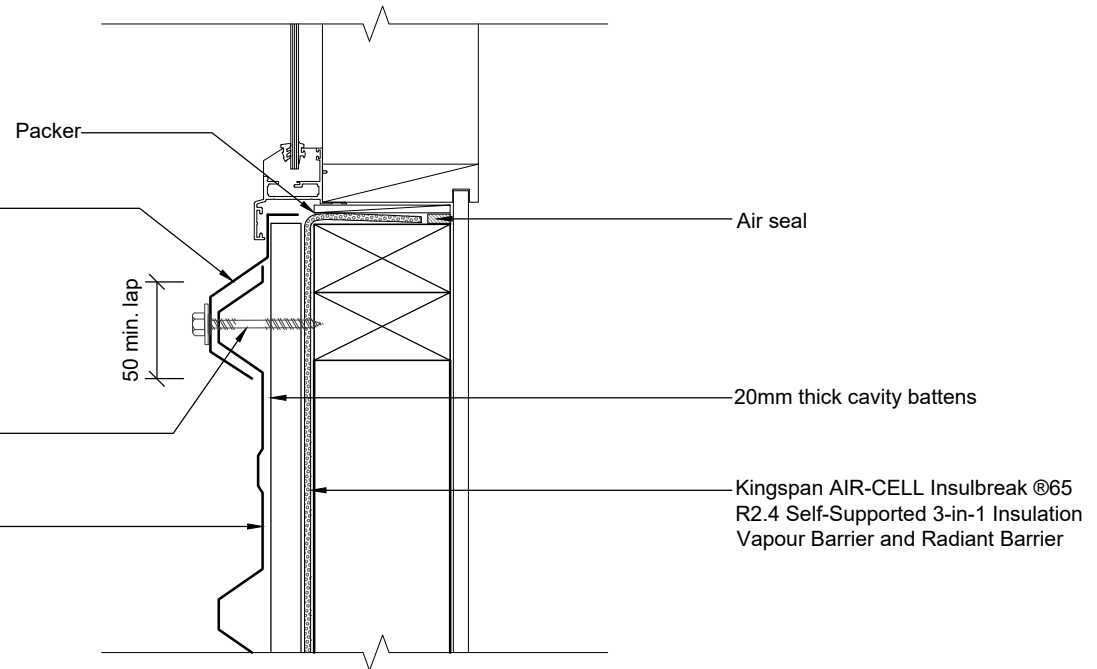


RPFL Colorbond® XRW/Ultra 0.55 BMT Sill  
 Flashing Base Materials: coating AZ200 Steel  
 Grade G300. fixed to cladding ribs with SDM Screw.  
 Ensure fall to the front.

BRA-TYPE 17 Self drilling assemblies for Timber.  
 Type 17 14-10x75 HEX Bra at every crest.

RPFL SuperDek® Colorbond® XRW/Ultra  
 0.42BMT/0.48BMT cladding. Base Materials: Steel Grade  
 G550. BMT 0.42.Mass 4.3kg/m<sup>2</sup> or 0.48BMT 4.9kg/m<sup>2</sup>.  
 AZ 150 coating for XRW & AZ 200 coating for Ultra.  
 Profiles tested for Cyclonic Conditions.



**Notes:**

- These details are suitably fixed to allow for a theoretical thermal movement of up to 10mm. For thermal movement greater than this a clipping system should be considered.
- Where CCA or ACQ treated cavity battens are installed a barrier between and the cladding is required.



ROOFING & PROFILES (FIJI) LTD  
 PH: (679) 6673764. Mob: 9999 309  
 EMAIL: info@roofingandprofiles.com.fj

This drawing is the property of Roofing & Profiles (Fiji) Ltd and must not be copied or disclosed to any third party without the written consent of the company.  
 ALL DIMENSIONS ARE IN mm UNLESS STATED

PROJECT TITLE:  
 SILL FLASHING DETAILS  
 DRAWING TITLE:  
 SHOP DRAWING

Nos:	Revision:		
1.			
2.			
3.			
4.			
5.			

DRAWN: R. Lal	SCALE: 1:5 @ A4	SHEET No : SD 2161
DATE : 15/ 01 /2021	REVISION No:	REVISION TITLE:
CHECKED BY: -	APPROVED BY: -	JOB NUMBER: