

RPFL SuperDek® Colorbond® XRW/Ultra 0.42BMT/0.48BMT wall cladding. Base Materials: Steel Grade G550. BMT 0.42. Mass 4.3kg/m<sup>2</sup> or 0.48BMT 4.9kg/m<sup>2</sup>. AZ 150 coating for XRW & AZ 200 coating for Ultra. Profiles tested for Cyclonic Conditions.

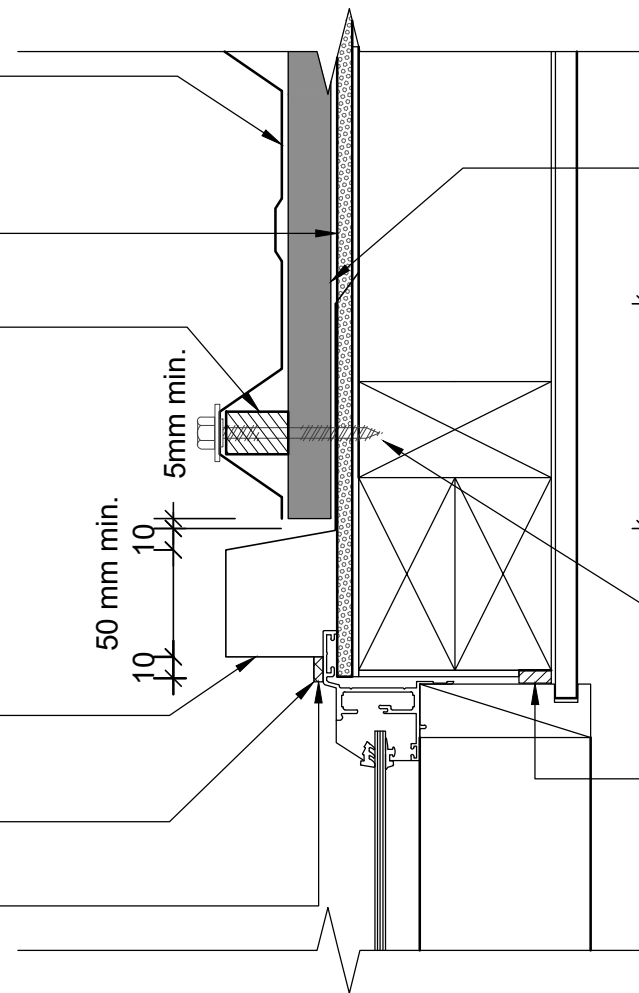
Kingspan AIR-CELL Insulbreak ®65 R2.4 Self-Supported 3-in-1 Insulation Vapour Barrier and Radiant Barrier

Top & Bottom Infill Strips/filler block or profiled foam fillers insert between roof cladding and flashing.

RPFL Std Colorbond® XRW/Ultra 0.55 BMT HeadFlashing Base Materials: coating AZ200 Steel Grade G300. fixed to the roof cladding with SDA Screw, 15° fall to top

Use sealant for every high wind zones & above

Maintain a 5 mm gap around the window frame



20 mm thick cavity battens

110 mm min. lap

BRA-TYPE 17 Self drilling assemblies for Timber. Type 17 14-10x75 HEX Bra. B8 protection to AS 3566 class 4. Tested & Certified to AS/NZS 1170.2 & BCA 2006 specification B1.2 for the design of building in cyclone area. For Timber Purlins. Fixed at every stud

Air seal

**Notes:**

- These details are suitably fixed to allow for a theoretical thermal movement of up to 10mm. For thermal movement greater than this a clipping system should be considered.



Roofing & Profiles (Fiji) Pte Ltd  
Ph: (679) 6673764 M: 999 9309  
Email: info@roofingandprofiles.com.fj

This drawing is the property of Roofing & Profiles (Fiji) Pte Ltd and must not be copied or disclosed to any third party without the written consent of the company.  
ALL DIMENSIONS ARE IN mm UNLESS STATED

PROJECT TITLE:  
**ROOF DETAILS**  
  
DRAWING TITLE:  
**SHOP DRAWINGS**

DRAWN: RRF	SCALE: 1:5 @ A4	SHEET No : SD-2141
DATE : 14/01/2021	REVISION No:	REVISION TITLE:
CHECKED BY:	APPROVED BY:	JOB NUMBER: 13 - RAIN