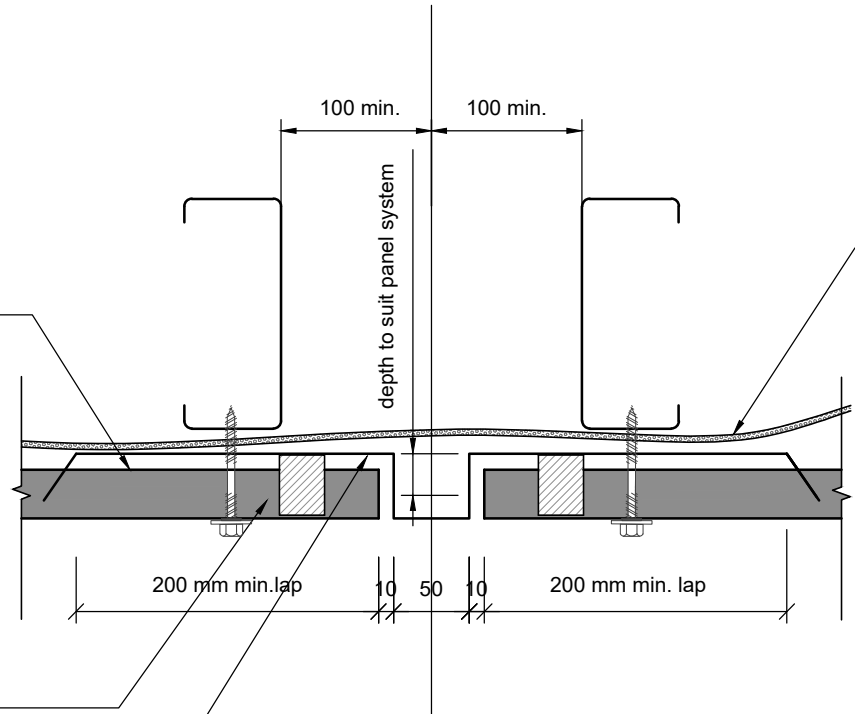


RPFL SuperDek® Colorbond® XRW/Ultra 0.42BMT/0.48BMT cladding. Base Materials: Steel Grade G550. BMT 0.42. Mass 4.3kg/m<sup>2</sup> or 0.48BMT 4.9kg/m<sup>2</sup>. AZ 150 coating for XRW & AZ 200 coating for Ultra. Minimum Roof Pitch 2 degree. Profiles tested for Cyclonic Conditions.



Kingspan AIR-CELL Insulbreak  
 ®65 R2.4 Self-Supported 3-in-1  
 Insulation Vapour Barrier and  
 Radiant Barrier

Top & Bottom Infill Strips/filler block or profiled foam fillers insert between cladding and flashing.

RPFL Std Colorbond® XRW/Ultra 0.55 BMT CAPPING. Base Materials: coating AZ150/AZ200 Steel Grade G300. fixed to the roof cladding with SDM Screw.

Notes:  
 - These details are suitably fixed to allow for a theoretical thermal movement of up to 10mm. For thermal movement greater than this a clipping system should be considered.



ROOFING & PROFILES (FIJI) LTD  
 PH: (679) 6673764. Mob: 9999 309  
 EMAIL: info@roofingandprofiles.com.fj

This drawing is the property of Roofing & Profiles (Fiji) Ltd and must not be copied or disclosed to any third party without the written consent of the company.  
 ALL DIMENSIONS ARE IN mm UNLESS STATED

PROJECT TITLE:  
 WALL CLADDING DETAILS  
 DRAWING TITLE:  
 SHOP DRAWING

Nos:	Revision:		
1.			
2.			
3.			
4.			
5.			

DRAWN: R. Lal  
 DATE: 15/01/2021  
 CHECKED BY: -

SCALE: 1:5 @ A4  
 REVISION No:  
 APPROVED BY: -

SHEET No: SD 2080  
 REVISION TITLE:  
 JOB NUMBER: