

Dektite

Design features



Flexible Cone Sleeve

Dektite cone shape eliminates seal breakdown due to vibration or expansion and contraction, while isolation of pipe from sheeting dampens noise levels.

Stress Isolation Points

Unique to Dektite, two flexible shoulders absorb distortion and stop transfer of stresses from base to cone, as unit is formed over roofing profile.

Bonded Aluminium Flange

Corrosion-resistant, malleable flange, evenly distributes fastening pressure and allows ease of hand-shaping on most sheet profiles.

Integrity of Flashing Shape

Minimal distortion after installation, maintains natural flashing shape and seal around pipe, while water run-off is improved.

UV Protection

Dektite products are resistant to ultraviolet light damage and will remain fully flexible under all conditions.

Easily Identified Sizing

Pipe diameter rings are clearly marked on the cone sleeve (metric and imperial) for cutting to match the appropriate pipe diameter.

Low Profile Design

Sleek, unobtrusive shape is designed to minimise silhouette on roofline, while managing to provide generous internal clearance for steep, angular installations.

Improved Waterproofing

Designed to strengthen sealant bond and improve waterproofing, the ribbed base also has a tapered edge to improve runoff and contribute to a superior waterproof seal.

Perfect for approved flues!

Dektite EPDM polymer flashings have been officially tested and conform to all Australian and New Zealand Standards on approved flue systems. EPDM withstands temperatures from -50°C - 115°C and up to 150°C intermittently. withstands temperatures from -60°C - 200°C and up to 250°C intermittently.

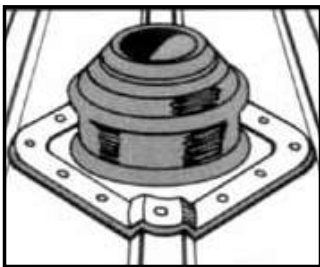
Dektite Premium

The versatile solution

- ✓ Most extensive range of Dektites 0 – 510mm penetrations, available in black and grey EPDM and silicone red for high temperatures.
- ✓ Designed to enable practically any pipe flashing operation to be carried out within minutes, simple to install and very effective.
- ✓ The low profile cone not only looks good but provides a generous internal clearance, so even the steepest roofs are handled with ease.
- ✓ Around the base of the cone a flexible bead reduces stress on the flashing membrane.
- ✓ Suitable for flashing pipes that penetrate wall claddings.
- ✓ For a maintenance free seal on pipes from 0 – 510mm diameter, it's much more than a flexible solution to pipe flashing, it's a means of saving time and money.
- ✓ Can also be used to flash square penetrations. Just add 30% to the pipe diameter and trim the cone to suit.
- ✓ EPDM withstands temperatures from -50°C – 115°C and up to 150°C intermittently.
- ✓ Silicone withstands temperatures from -60°C – 200°C and up to 250°C intermittently.

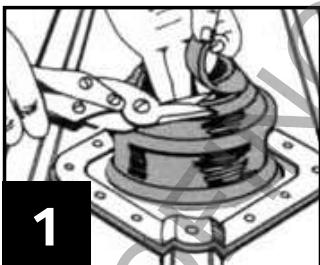


Installation Instructions:



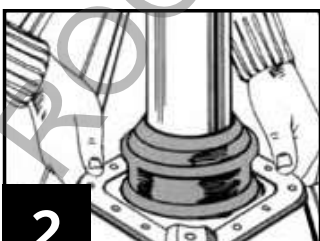
NOTE:

For more effective drainage, always fit the Dektite on the diamond or bias.
Dektites are suitable for flashing pipes that penetrate wall claddings.



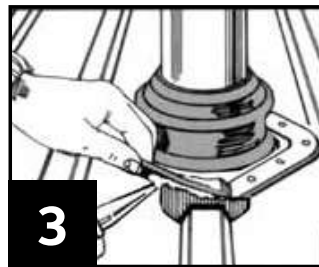
1

Cut a neat hole in roofing sheet with minimum clearance for pipe and insert pipe through hole. Trim the cone to suit pipe size using sharp tin snips. Where required, support cut sections of sheet with additional framing.



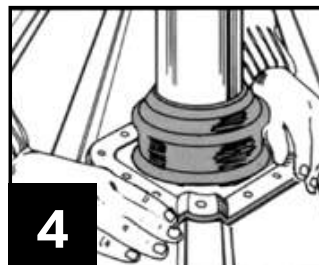
2

Slide Dektite flashing down over pipe. Lubricating the pipe with water allows the pipe to slide snugly into position.



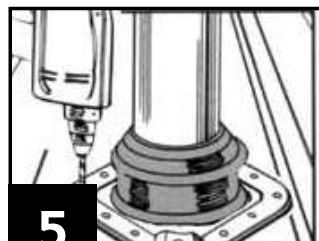
3

Apply a neutral-cure silicone sealant by turning back the flexible flange (refer to page 13 for silicone types).



4

Press base to the roof profile by hand, smooth out any awkward creases. Don't fully extend to allow for vibration.



5

Fasten using self drilling washered screws. Fit fasteners progressively outward in opposing pairs to avoid gaps.

Code: Black EPDM	Code: Grey EPDM	Code: Red Silicone	Base (mm)	Pipe (mm)	Pitch
DFE10MB			71 x 71	0-20	0-60
DFE100B	DFE100MG		100 x 100	0-35	0-60
DFE100BS		DFE200RES	100 x 100	0-35	0-60
DFE101B	DFE101G		139 x 139	5-55	0-45
DFE101BS		DFE201RES	139 x 139	5-55	0-45
DFE102BA	DFE102GA	DFE202REA	181 x 181	50-70	0-45
DFE103B	DFE103G	DFE203RE	218 x 218	5-127	0-45
DFE104B	DFE104G	DFE204RE	279 x 279	75-175	0-45
DFE105B	DFE105G	DFE205RE	309 x 309	100-200	0-45
DFE106B	DFE106G	DFE206RE	363 x 363	125-230	0-45
DFE107B	DFE107G	DFE207RE	456 x 456	150-300	0-45
DFE108B	DFE108G	DFE208RE	495 x 495	170-355	0-45
DFE109B	DFE109G	DFE209RE	680 x 680	230-508	0-45



DFE201RES



DFE100BS

Dektite Combo

Flash over or around. A standard Dektite and Retrofit all in one.

- ✓ The unique cone design makes the combo range suitable for both standard and retrofit applications.
- ✓ When retrofit is required just cut and apply clips for ease of application. **Clips included.**
- ✓ Suitable for roof pitches up to 40°.
- ✓ Provides 10 - 20mm continuous contact with flashed pipe providing a watertight seal.
- ✓ Clear markings makes for easier cutting to pipe size.
- ✓ Size ranges - Numbers 1 - 10 (5 - 750mm)
- ✓ Available in black EPDM.
- ✓ Just fit it and forget it - we've got you covered.
- ✓ EPDM withstands temperatures from -50°C - 115°C and up to 150°C intermittently.



Combo Selection Guide

Code	Description	Pipe (mm)	Base (mm)	Roof Pitch
DC101BC	Dektite Combo #1	5-60mm	139 x 139mm	0-40°
DC102BC	Dektite Combo #2	45-85mm	177 x 177mm	0-40°
DC103BC	Dektite Combo #3	5-127mm	221 x 221mm	0-40°
DC104BC	Dektite Combo #4	75-175mm	285 x 285mm	0-40°
DC105BC	Dektite Combo #5	108-190mm	366 x 366mm	0-40°
DC106BC	Dektite Combo #6	125-230mm	366 x 366mm	0-40°
DC107BC	Dektite Combo #7	150-280mm	454 x 454mm	0-40°
DC108BC	Dektite Combo #8	175-330mm	454 x 454mm	0-40°
DC109BC	Dektite Combo #9	240-508mm	705 x 705mm	0-40°
DC110BC	Dektite Combo #10	400-750 mm	995 x 965mm	0-40°

Combo Square Selection Guide

Code	Description	Pipe (mm)	Base (mm)	Roof Pitch
DCS103BC	Dektite Combo Square	20-125 mm	221 x 221mm	0-40°



Installation Instructions

Standard Application

- 1 Trim the cone to suit pipe size using sharp tin snips.
- 2 Slide down pipe using water as a lubricant.
- 3 Apply a liberal bead of silicone sealant on underside of flexible aluminium base (refer to page 13 for silicone types).
- 4 Press base to the roof profile by hand. Smooth out any awkward creases. Don't fully extend to allow for vibration.
- 5 Fasten using self drilling washered screws.

Retrofit Application

- 1 Trim cone to suit pipe size then cut seam and aluminium base using sharp tin snips.
- 2 Apply a liberal bead of silicone to one side of the cut seam.
- 3 With seam in downstream position wrap cone around pipe and engage 1st double clip at top of seam using multigrips.
- 4 Engage remaining clips working down from top of cone to base.
- 5 Apply liberal bead of silicone sealant to underside of Dektite Combo and shape to roof by hand (refer to page 13 for silicone types). Screw down using self drilling washered screws.
- 6 Fasten flashing down by placing a fastener either side of seam first then secure rest of base.
- 7 Apply sealant to top of base closure and any other potential leak areas.

Dektite Flatseal

For flat and low pitch roofs

- ✓ For Flat and low pitch roofs with single ply or bitumen coverings.
- ✓ No special tools or fittings are needed.
- ✓ Flatseal EPDM snaps tight to pipe without clips.
- ✓ Seals to roof with hot or cold liquid bitumen.
- ✓ Black EPDM for maximum UV and Ozone resistance.

Code	Base (mm)	Pipe (mm)	Colour
FS25-175	345	25-175	BLACK (EPDM)



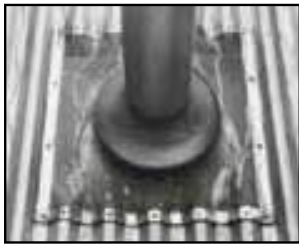
Dektite Soaker

The perfect flashing for all tray roofs

- ✓ The large base of the Dektite Soaker dramatically reduces rainwater back up on very low or very high roof pitches and deep ribbed roofing profiles.
- ✓ Dektite Soakers are ready to use straight from the box.
- ✓ Faster to flash than old fashioned methods.
- ✓ The unique corrosion resistant aluminium flange is ideal for low pitch and deep profile roofs, providing a positive leak-proof seal.
- ✓ EPDM withstands temperatures from -50°C - 115°C and up to 150°C intermittently.

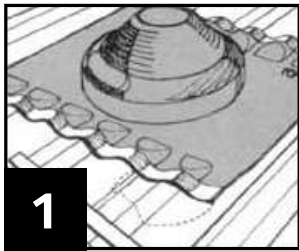
IMPORTANT:

For any pitch above 40° do not cut below the first three sizing ribs on the 603, 605 and 606

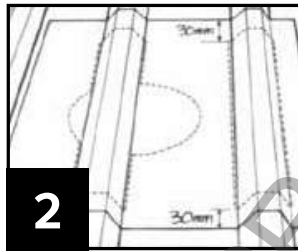


Code	Base (mm)	Pipe (mm)	Pitch	Pipe (mm)	Pitch
DF 602	410 x 360	75-160	0-60°		
DF 603	485 x 460	114-165	0-60°	114-255	0-40°
DF 605	708 x 635	250-358	0-60°	250-410	0-40°
DF 606	1006 x 905	380-470	0-60°	380-610	0-40°

Installation Instructions:



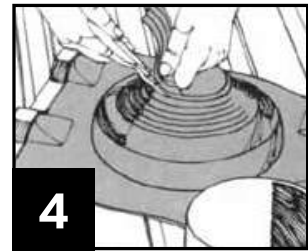
1 Mark position of pipe on roofing sheet, centre Dektite Soaker over mark ensuring word "top" is towards highest part of roof, and form Dektite Soaker flanges to roof profile.



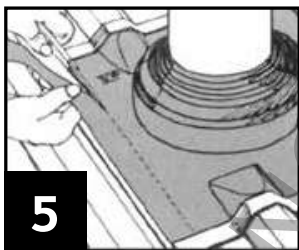
2 Mark ribs or corrugations to be removed to allow adequate drainage around cone. Allow at least 30mm all round to fasten Dektite Soaker's aluminium strips to roofing sheet.



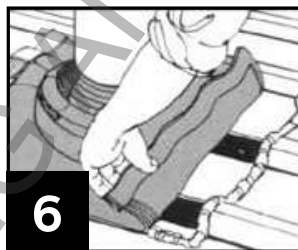
3 Cut out marked portions of roof, filing away sharp edges and install pipe securely in place. Where required, support cut sections of sheet with additional framing.



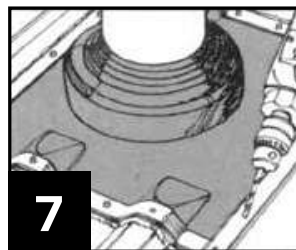
4 Trim Dektite Soaker cone to suit pipe size with sharp tin snips and slide down pipe using water as lubricant.



5 Form Dektite Soaker base into contours of roofing sheet, positioning loose strips on either side of cone in best position to ensure drainage of pan or tray. Trim excess EPDM from outside of loose strips. Trimming should be considered prior to cutting of the roof sheet.



6 Apply a generous bead of neutral-cure silicone sealant to underside of Dektite Soaker base along entire perimeter (refer to page 13 for silicone types).



7 Fasten flashing to roof using washers self-drilling screws, ensuring Dektite Soaker forms flat trough for water run-off. Fix integral aluminium strips from centre outwards before attaching loose strips provided.



Dektite Retrofit Soaker

Designed to flash where access to installation is restricted

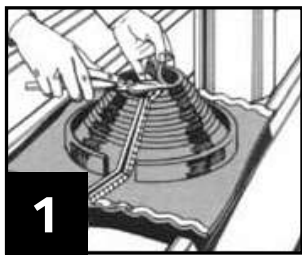
- ✓ Like Dektite retrofit, they are designed to flash where access to installation is restricted.
- ✓ The unique crimp closure mechanism makes pipe or vent flashing an elementary wrap and seal procedure requiring no soldering or special tools.
- ✓ The Dektite Retrofit Soaker will flex with the roof decking without cracking or leaking and their smooth tray area means water run-off is super efficient.
- ✓ EPDM withstands temperatures from -50°C - 115°C and up to 150°C intermittently.

One Standard Size: for 235 - 425mm pipes

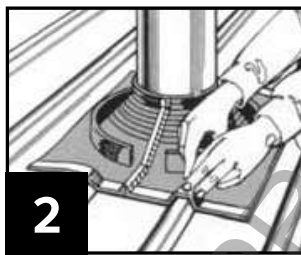
Code	Base (mm)	Pipe (mm)	Pitch	Colour
RSF 4	750 x 660	235-425	0-45°	GREY (EPDM)



Installation Instructions:



1 Measure outside pipe diameter and trim cone exactly where indicated.



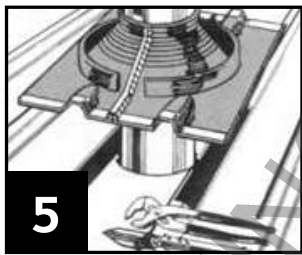
2 Mark out area where ribs of roof panel are to be removed. Where necessary support cut sections of sheet with additional roof framing.



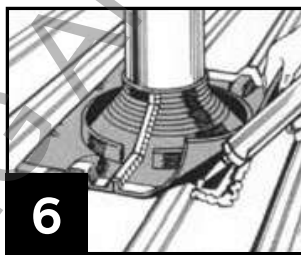
3 With clip in down-stream position tension top of cone around pipe and engage metal teeth in opposing pockets.



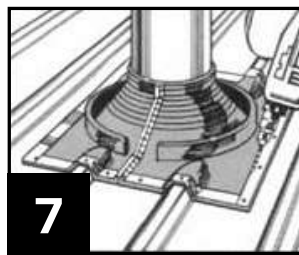
4 Crimp the top three clips with pliers. To assist in completion of crimp, place hand behind the seam for support and continue crimping. Do not overcrimp.



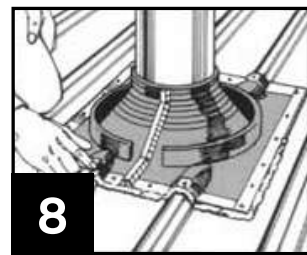
5 Form Dektite base into contours of roofing sheet, positioning loose strips on either side of cone in best position to ensure drainage of pan or tray and trim sides if necessary. Trimming should be considered prior to cutting of the roof sheet.



6 Apply a neutral-cure silicone sealant to underside of Dektite base and press to contour of sheet profile.



7 Fasten flashing to roof using washered self drilling screws. Secure clip by placing a fastener either side of the clip.



8 Apply neutral-cure sealant to top of crimp closure and any other potential leak areas (refer to page 13 for silicone types).

Dektite Retrofit

When it has to flash around and not over...



- ✓ Wraps around existing or difficult to access pipes, installations are a breeze.
- ✓ The built-in crimps mean no loose clips or rivets, snaps together in seconds.
- ✓ Made from quality polymer compounds, grips tight and stays tight.
- ✓ The supple aluminium base conforms like magic for easy profile moulding.
- ✓ Can also be used to flash square penetrations. Just add 30% to the pipe diameter and trim the cone to suit.
- ✓ EPDM withstands temperatures from -50°C - 115°C and up to 150°C intermittently.
- ✓ Red Silicone will withstand constant temperatures at the roofline of -50°C to 200°C and up to 250°C intermittently
- ✓ For pipes over 150mm Ø use a stainless steel support / hose clamp.



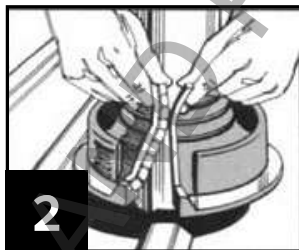
Code:	Code:	Base	Pipe	Pitch
Grey EPDM	Red Silicone	(mm)	(mm)	
RF 801G	RF901	160	20-70	0-40°
RF 802G	RF902	273	50-185	0-40°
RF 803G	RF903	369	85-255	0-40°

Installation Instructions:



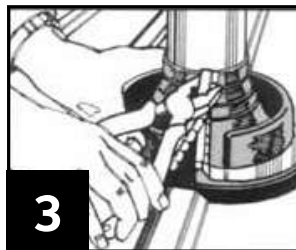
1

Measure outside pipe diameter and trim cone exactly where indicated.
For square pipes add 30%.



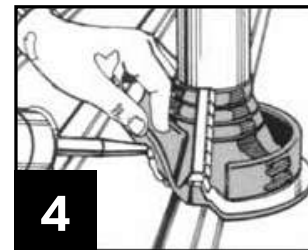
2

With clip in down-stream position, tension top of cone around pipe and engage metal teeth in opposing pockets.



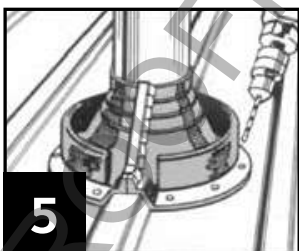
3

To assist in locating clip into pocket, place hand behind the seam. Fasten clip with pliers or multi-grips, working from top to base. **Do not overcrimp.**



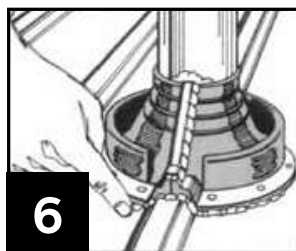
4

Apply a liberal bead of neutral silicone sealant to the underside of Dektite base and press to contour of sheet profile.



5

Fasten flashing with washered self drilling screws. As per diagram, secure clip by placing a fastener either side of the clip first.



6

Apply sealant to top of crimp closure and any other potential leak areas. (refer to page 13 for silicone types).

Acrylead Tile Flash

For tiled and slate roofs

- ✓ Acrylead offers the benefit of a thermo baked acrylic primer coating to both surfaces of the lead apron, ready for finish coating to match surrounding roof or trim colours.
- ✓ The potential for lead oxides to leach from the apron and cause staining is now virtually eliminated.
- ✓ EPDM withstands temperatures from -50°C - 115°C and up to 150°C intermittently.
- ✓ Easy to install - no messy sealants required or sticky backing used.



Code	Base (mm)	Pipe (mm)	Pitch	Colour
TFL5-55	300 x 500	5-55	0-45°	GREY (EPDM)
TFL50-70	300 x 500	50-70	0-45°	
TFL5-127	400 x 600	5-127	0-45°	
TFL75-175	450 x 600	75-175	0-45°	
TFL150-300	600 x 900	150-300	0-45°	

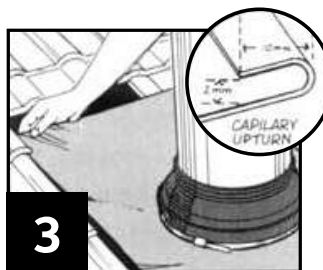
Installation Instructions for Lead and Aluminium Flashing:



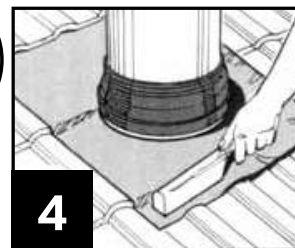
1 Trim Tileflash cone to suit pipe size.



2 After first lubricating the flue with water, slide Tileflash down to tile level.



3 Flatten the Acrylead and form a anti-cappillary fold. Then place the upper edge of the base underneath the tiles up stream.



4 Finally, dress the apron to the surrounding tile area.

Dektite Aluminium

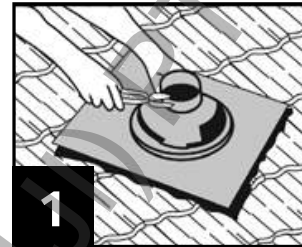
The best solution for stone chip and pressed metal tiles

- ✓ The base is 99.9% pure grade aluminium making it strong, malleable and easy to install.
- ✓ Environmentally friendly, ideal where potable water is collected.
- ✓ The best solution for stone chip and pressed metal tiles.
- ✓ EPDM withstands temperatures from -50°C - 115°C and up to 150°C intermittently.

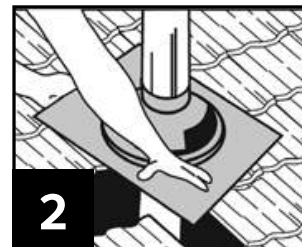
Code	Base (mm)	Pipe (mm)	Pitch	Colour
TFA 12-70	500 x 600	12-70	0-45°	BLACK (EPDM)
TFA 50-170	600 x 600	50-170	0-45°	
TFA 110-220	764 x 764	110-200	0-45°	
TFA 160-300	764 x 764	160-300	0-45°	
TFA 300-450	965 x 965	300-450	0-45°	



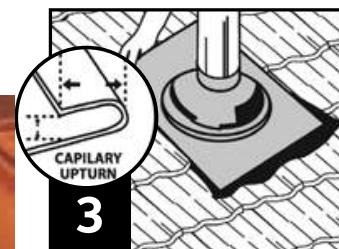
Installation Instructions:



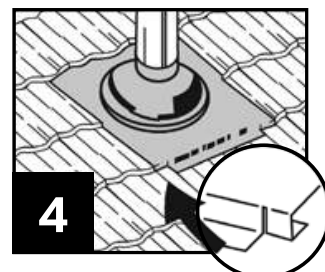
1 Trim Dektite cone to suit pipe size using sharp tin snips.



2 After lubricating the flue with water, slide Dektite down to the tile level.



3 Form an anti-capillary fold then place upper edge of base under up-stream tiles.



4 Dress base to profile, cut tabs on the bottom corners and fold under to stop wind lift.