

Sky Tunnel XL²

INSTALLATION INSTRUCTIONS FOR TILE & CUSTOM ORB ROOF TYPES

ALL WORK CARRIED OUT BY THE INSTALLER SHOULD BE IN ACCORDANCE WITH LOCAL LAWS & SAFETY REGULATIONS.

ATTENTION - WEAR SAFETY GLOVES TO AVOID INJURY WHEN HANDLING.

Care must be taken when handling skylight components. Ends and edges of materials used are sharp.

FOR ALL ROOF TYPES

1

First decide approximately where you would like your Sky Tunnel located in the room.

Check that the attic space is clear of obstructions above where you wish to locate the Sky Tunnel.

Measure to the centre, between the Ceiling Joists and tap a small nail through the ceiling from the top.

Then check you are happy with the position for your Sky Tunnel inside the room.

2



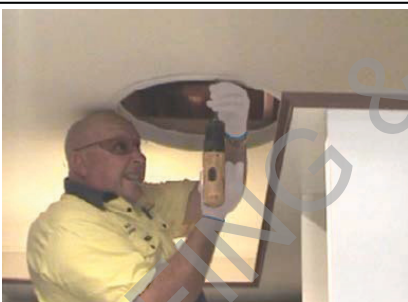
Using the up-stand of the Ceiling Frame as a template, or using the template on your Ceiling Parts Box, mark the hole size on the ceiling with a pencil, ensuring the nail hole is at the centre.

3



Cut neatly along the pencil line on the ceiling with a keyhole saw. You should wear protective equipment such as Safety Glasses and mask where possible, as dust and debris may fall whilst cutting. Hold the middle of the circle you are cutting when nearing the end to stop the panel falling out.

4



Insert the Ceiling Frame and attach with the 50mm Supachip Screws and plastic lugs provided. The plastic lugs are placed on the top side of the ceiling. Fasten the screws through the holes in the ceiling frame, the ceiling and into the white plastic lugs tighten.

SEE STEP 5 BEFORE PUTTING IN SCREW CAPS

5

**** IMPORTANT STEP ****

Check that your Diffuser sits flush and the magnets lock onto the ceiling frame magnets correctly.

If your ceiling is not flat, you may need to loosen 1 or 2 screws slightly allowing contact of all magnets.

Once this is ok, put diffuser aside, and place white screw caps into the screws to cover them.

You can now move onto the roof & attic part of the Installation. You will return inside to finish the job later.

6



Push the Stainless Steel Ring (with the Flexi-tube fitted) into the underneath of the Black Breather Frame, lining up the slots in the Ring with the Lugs in the Breather Frame.

Twist the Stainless Steel Ring to lock it into position.



FOR TILE ROOF - PROCEED TO STEP 7

FOR C/ORB ROOF - PROCEED TO STEP 13



FOR TILE ROOF ONLY

These Instructions should be used as a guide only to assist with the Installation.

7

From inside the attic, choose the most direct route for the Flexi-tube to reach the roof.

Push back a tile to mark the location.

Make sure there is a clear area of roof above your location.

**** Important Note ****

Also consider that skylights work best with a Northern Exposure and that the shorter, straighter and tighter the Flexi-tube is, the better the Sky Tunnel will perform.

8

On the roof, you will see where you have pushed back your tile.

Remove tiles from this area of the roof and cut out the tile batten. This is only used to support the tiles, that you have now removed.

9

Lower the Sky Tunnel into position.

Be careful to make sure the Flexi-tube does not catch on any of the tiles or roof timbers.

10

Ensure the rear portion of the Soaker Tray is underneath the tiles behind and the front portion is on top of the tiles.

Re install any tiles (trim if necessary) to cover the sides of the Soaker Tray.

11

Gently mould the corrugated flashing at the front of the Sky Tunnel to match the profile of the tiles.

12

Clean around the Sky Tunnel and the Flashing, removing any Debris and any Rubbish from the roof.

Remove the Protective Plastic Film from the dome.

You can now Finish the Installation Inside the room.



PROCEED TO STEP 22

FOR C/ORB ROOF ONLY

These Instructions should be used as a guide only to assist with the Installation.

13

From inside the attic, choose the most direct route for the Flexi-tube to reach the roof.

Using a drill and self drilling screw, screw through the roof, central to where you will install the roof parts.

Make sure there is a clear area of roof above your location.

**** Important Note ****

Also consider that skylights work best with a Northern Exposure and that the shorter, straighter and tighter the Flexi-tube is, the better the Sky Tunnel will perform.

14

After finding your screw which acts as a guide for the centre of your hole.

Mark the Hole Size, it should be approx:
 343mm dia - 610mm(w) x 480mm (h)
 457mm dia - 690mm(w) x 580mm (h)
 535mm dia - 770mm(w) x 680mm (h)
 The line along high side should go one corrugation further on both sides, and stop at the highest point of the corrugation. Side lines should also be on highest point.

15

For each Sky Tunnel, double check all your measurements on the roof and the Soaker Tray to ensure you will get full coverage over the hole, with plenty of overlap on all sides. Back of Soaker Tray will be under the Roof Sheets.

**** Make Sure ALL cuts will finish on the highest point of a corrugation.**



Remove any Roof Sheeting Tek Screws from the area around where the Sky Tunnel is going to be installed.



Cut out along the lines that were marked, ensuring cuts finish on the highest point of a corrugation.

Ensure the correct cutting tools are used for the roof sheeting., whether manual or electric.



On the low side of the hole, bend up all of the lowest points on the corrugations to prevent any water blowing back up the corrugations, and under the Soaker Tray into the roof space.



**** An alternative to Steps 19 & 20 is: Install some Waterproof Corrugated Foam, available from some Hardware stores. It is designed to fill the gaps in corrugations such as these.**

On the high side of the hole, cut approx 20mm on the highest point of each corrugation.



Bend both sides of the cut downwards, to create an overlap, which closes off the corrugations on the high side.



If Sky Tunnel is not being Installed under the Ridge Capping.

Measure and Mark approx 90mm down from the back edge of the Soaker Tray, on both sides.

Measure and Mark 60mm in from both the side edges along the back edge.



Cut this "Triangle" off both sides of the Soaker Tray.



Left Side

Right Side



Lower the Sky Tunnel into position. Be careful to make sure the Flexi-tube does not catch on the Roof Sheeting.

The back edge of the Soaker Tray will be fitted under the Roof Sheeting. The Soaker Tray should be pushed up until the corners of the Soaker Tray meet flush with the cut in the Roof Sheet..



Re-install any Roof Sheeting Tek Screws that were removed.

If necessary, these can be fixed through the Soaker Tray.

25



Put a rivet into each corner on the high side of the Soaker Tray, and every 2nd corrugation, fixing the Soaker Tray to the roof sheeting.

Ensure any holes drilled are always on the high point of the corrugations.

26



Using a hammer, and rag to protect the surface gently tap the front of the soaker tray between the high points on the roof sheeting to mould the soaker tray to the roof profile.

27



Clean around the Sky Tunnel and the Flashing, removing any Debris and Rubbish from the roof.

Be sure to make sure any "swarf" from drilling the metal surfaces is removed to prevent them rusting on the surface of the Soaker Tray or Roof Sheeting.

28



Using a Roof & Gutter Silicone, seal both corners on the high side of the Soaker Tray.

29



Remove the Protective Plastic Film from the dome.

30



The Installed Roof Parts should look like this.

You can now Finish the Installation Inside the room.

FOR ALL ROOF TYPES - FINISHING THE INSTALLATION

31



Reach through the Ceiling Frame and pull the Flexi-tube through the Ceiling Frame and into the room. Continue pulling until it is tight, the wires will lock onto the lip at the top of the Ceiling Frame.

Cut the flexi-tube off level with the bottom of the Ceiling Frame.

32



Fit the White Plastic Flexi-tube Locking Ring into position with the Countersunk Screws provided.

Start at one end, and work your way around the Locking Ring. Be sure to line up the 2 x Recesses in the Flexi-tube Locking Ring with the recesses in the Ceiling Frame.

33



Fit the Diffuser into position. Ensure you line up the Magnets in the Diffuser Holder with the Magnets on the face of the Ceiling Frame.

If the Sky Tunnel is vented, place the extra magnets provided as a spacer between the Diffuser Holder Magnets and Ceiling Frame Magnets.